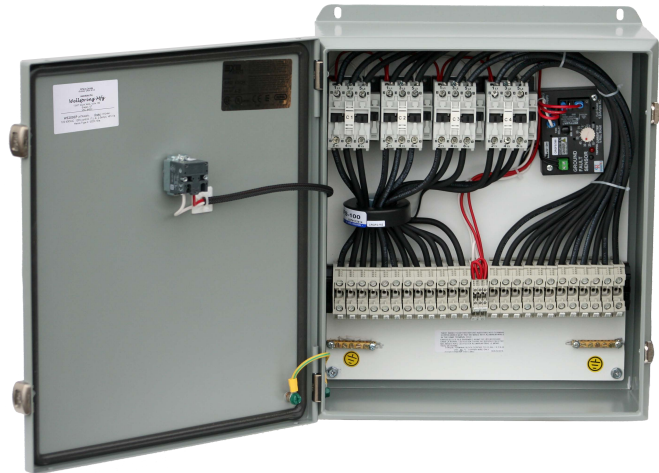


# CONTACTOR PANEL INSTALLATION



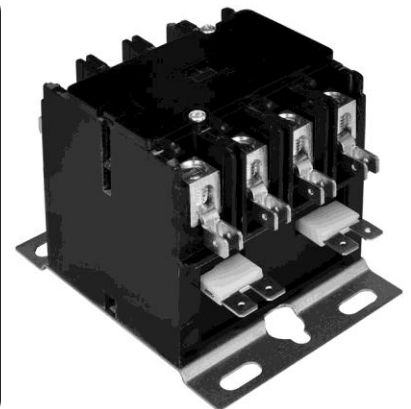
- It is **NOT** recommended that the panel be drilled out for any reason.
- If the panel must be drilled out, then please isolate the contactors and clean the inside of the panel thoroughly prior to reinstalling the contactors.
- Contactors that are exposed to ferrous material left inside of the contactor panel are likely to become noisy after being operated.
- Please follow the cleaning procedure on the back of this page if you are experiencing a load, chattering, noisy contactor.



**! CAUTION**

DO NOT DRILL INTO THIS ENCLOSURE WITHOUT ISOLATING THE CONTACTORS.  
FERROUS MATERIAL WILL CONTAMINATE THE CONTACTORS, CAUSING THEM TO PRODUCE EXCESSIVE NOISE AND LEAD TO PREMATURE FAILURE.

**STRONG MAGNETIC FIELD**



# **NOISY CONTACTORS SHOULD BE CLEANED PROPERLY PRIOR TO CONTACTING TECHNICAL SUPPORT.**

## **RECOMMENDED CLEANING PROCEDURE FOR ABB CONTACTORS:**

- 1) TURN OFF ALL POWER, INCLUDING CONTROL POWER (120v).
- 2) DISCONNECT ALL WIRES FROM THE CONTACTOR – LABEL ALL WIRES.
- 3) REMOVE MOUNTING SCREWS FROM THE CONTACTOR BASE.
- 4) REMOVE THE CONTACTOR.
- 5) TURN THE CONTACTOR UP-SIDE DOWN TO EXPOSE BASEPLATE SCREWS.
- 6) REMOVE SCREWS CAREFULLY.
- 7) REMOVE THE BASEPLATE AND STATIONARY ARMATURE.
- 8) IF THE STATIONARY ARMATURE IS NOT ATTACHED TO THE INSIDE OF THE BASEPLATE, THEN THE CONTACTOR IS BAD.
- 9) SLIDE THE CONTACTOR COIL OUT OF THE HOUSING - BE CAREFUL TO NOT LOSE THE SPRING.
- 10) TAKE A CLEAN, DRY COTTON TOWEL AND WIPE DOWN THE CONTACTOR COIL, THE STATIONARY ARMATURE, THE MOVABLE ARMATURE INSIDE THE HOUSING AND THE SPRING.
- 11) MAKE SURE THERE IS NO LOOSE DEBRIS ON THE BASEPLATE OR INSIDE THE CONTACTOR HOUSING.
- 12) TAKE A SMALL AMOUNT OF WD-40 AND WIPE DOWN ALL OF THE ABOVE COMPONENTS.
- 13) INSTALL THE SPRING WITH THE SMALL END OVER THE CENTER PILLAR OF THE MOVABLE ARMATURE.
- 14) INSTALL THE CONTACTOR COIL INTO THE SLOT OF THE CONTACTOR BODY SLIDING IT DOWN SO THE CENTER PILLAR OF THE MOVABLE ARMATURE WILL SLIDE FREELY IN AND OUT OF THE COIL CORE.
- 15) PLACE THE BASEPLATE WITH THE STATIONARY ARMATURE ONTO THE CONTACTOR BODY. MAKE SURE THAT THE ARMATURE COPPER BUS CONNECTORS ARE ON OPPOSITE ENDS OF ONE ANOTHER.
- 16) RE-INSTALL THE FOUR BASEPLATE SCREWS – MAKE SURE THAT EVERYTHING FITS TOGETHER EASILY WITHOUT BEING FORCED.
- 17) TEST THE UNIT TO VERIFY FUNCTION AND QUIETNESS OF CONTACTOR.
- 18) PLEASE CONTACT TECHNICAL SUPPORT IF THIS DOES NOT RESOLVE THE ISSUE.

**PLEASE CONTACT TECHNICAL SUPPORT IF THE CONTACTORS  
ARE STILL NOISY OR CHATTERING AFTER CLEANING THEM PER  
THESE INSTRUCTIONS.**

# **801-948-7577**

**WARMZONE**   
PREMIER RADIANT HEATING

By: **INNOVAIR**  
SOLUTIONS