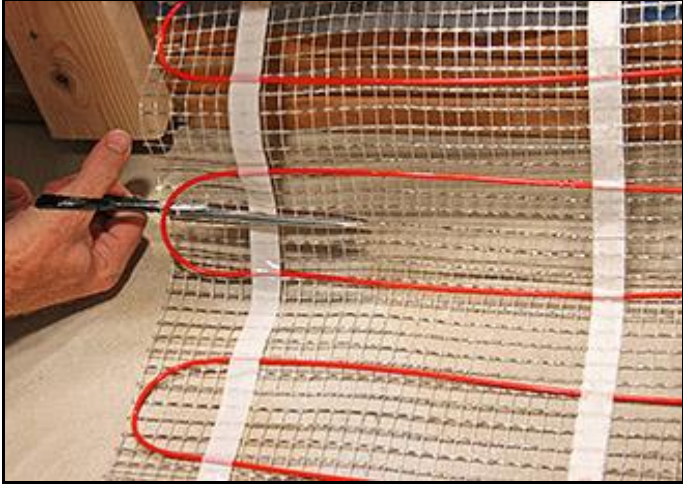


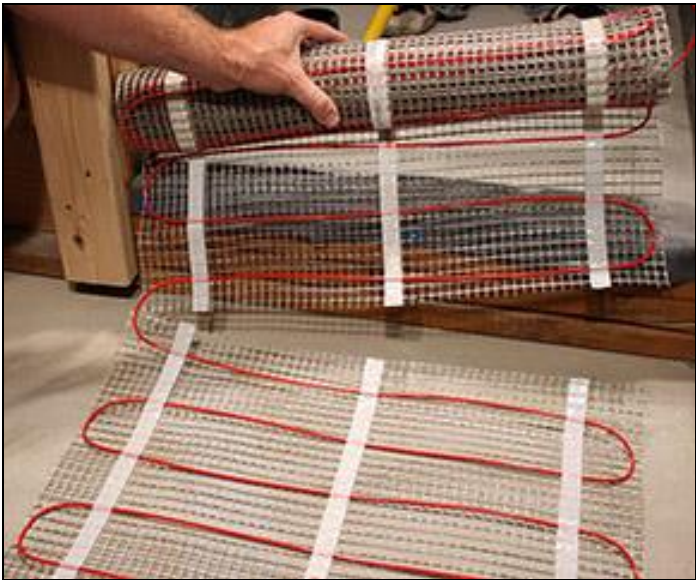
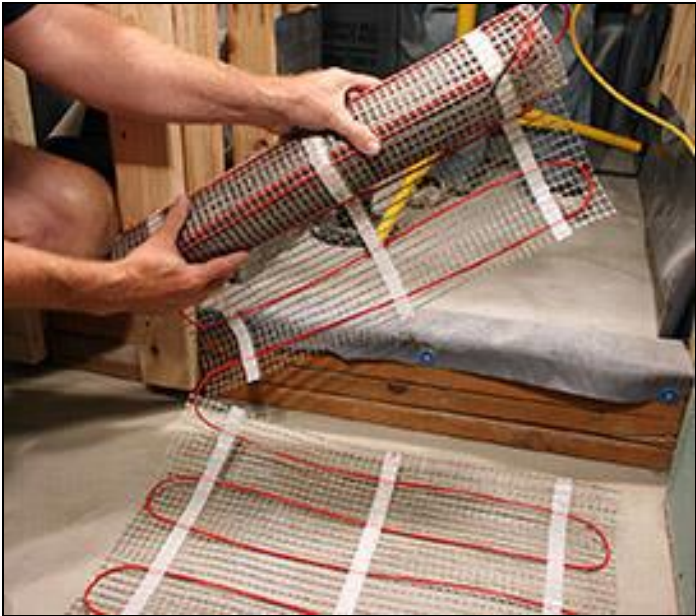


## Cutting the ComfortTile Floor Heating Mat for Turns

*Tips for Installing Radiant Floor Heating Mats*

1.		Carefully cut the mesh backing.
2.		Be sure to avoid cutting or damaging the heat cable.
3.		

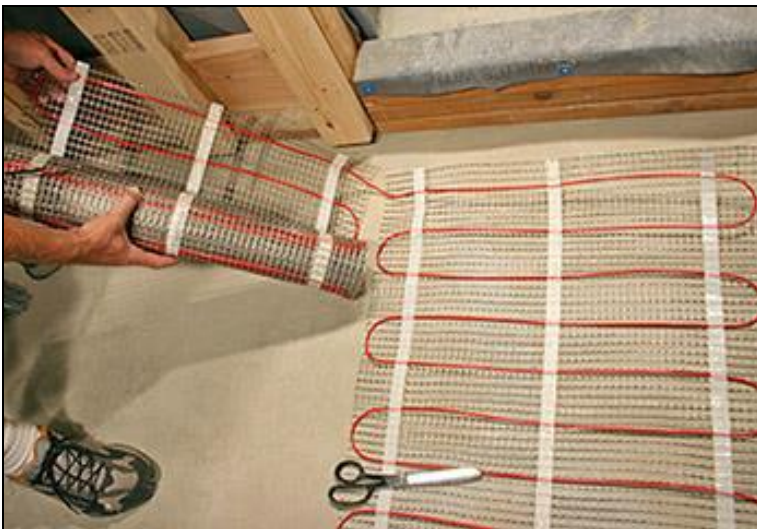
<p>4.</p>		<p>After cutting the mesh backing, pivot the mat to begin another row.</p>
<p>5.</p>		

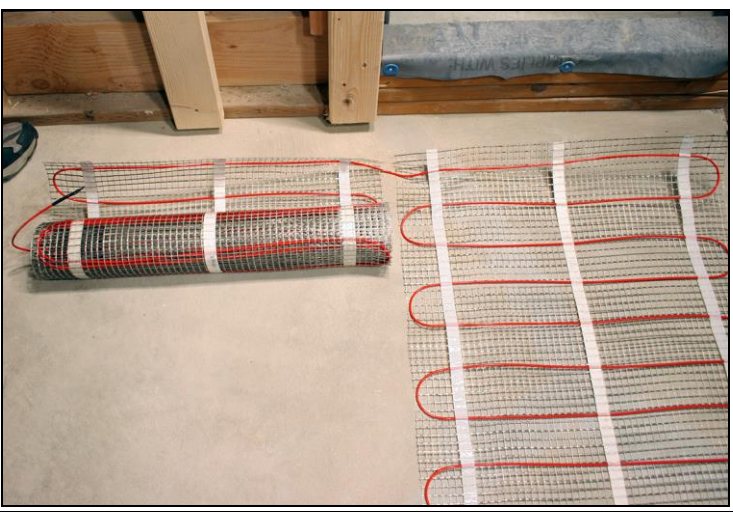
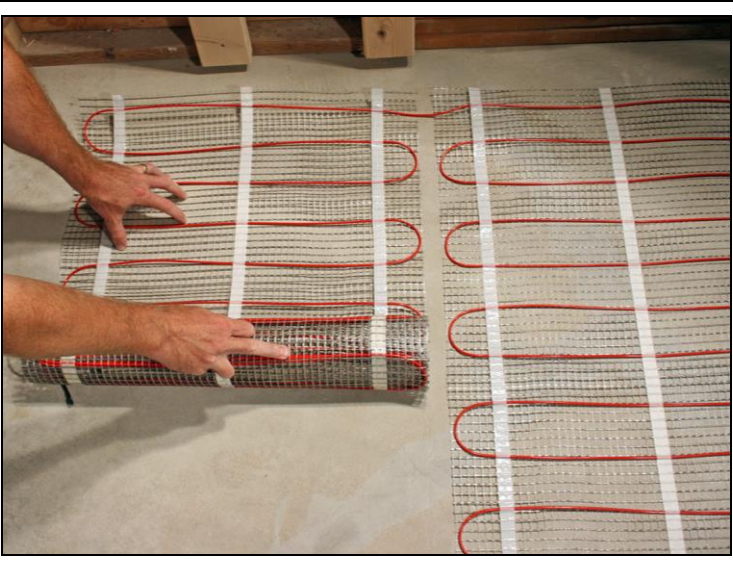
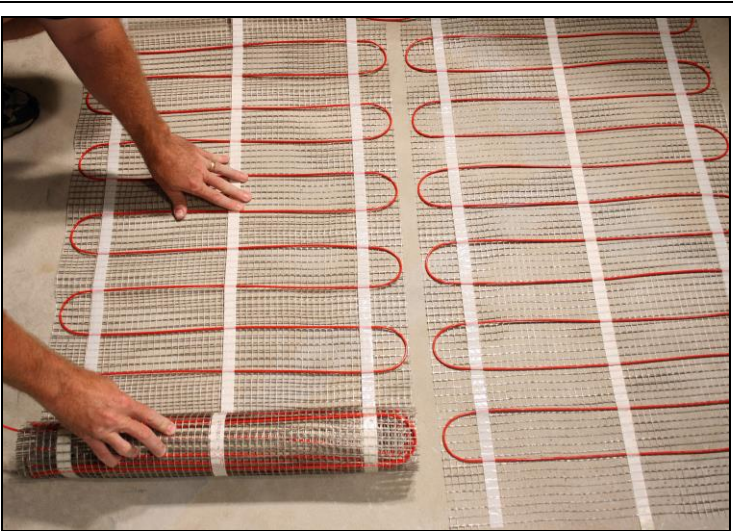


6.



7.



<p>8.</p>		<p>Align the mat to the row that has already been laid out.</p>
<p>9.</p>		<p>Begin unrolling the mat.</p>
<p>10.</p>		<p>Continue rolling out the mat next to the previous row. Make sure the cables of one row do not touch the cables of the other row.</p>